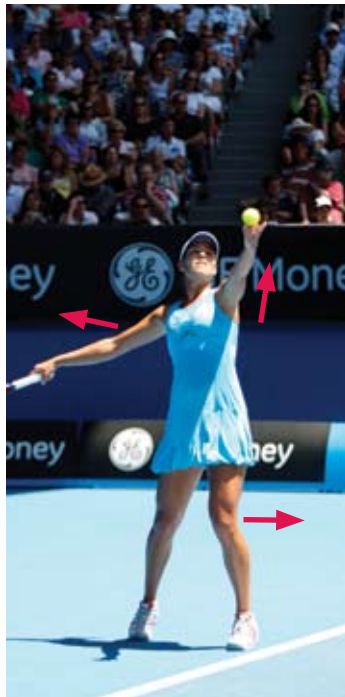


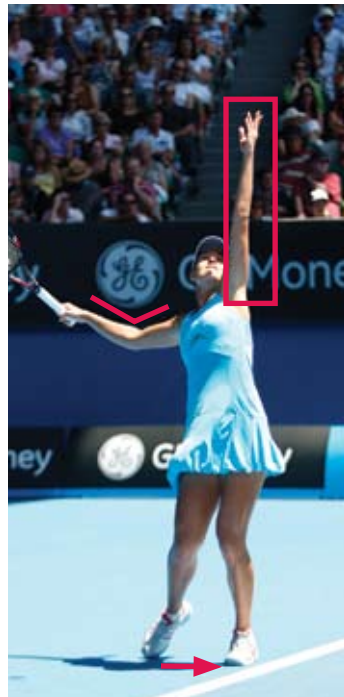
ALMOST PERFECT



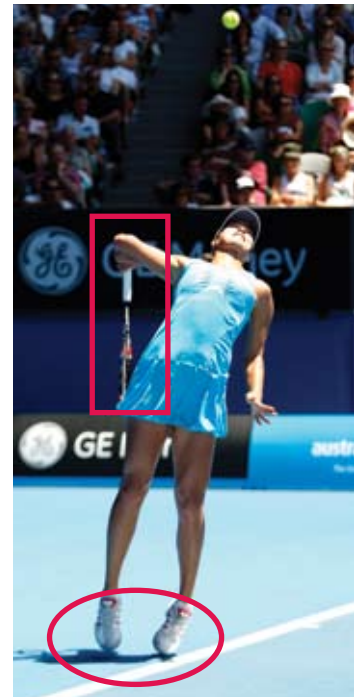
1 Note Ivanovic's good posture. Her head is slightly forward, feet are slightly side on and the movement is not too extreme, with her weight shifting slightly towards the back foot.



2 Ivanovic's racquet arm moves backward as her body weight moves forward. Take note – many juniors get this in the reverse order. Ana highlights a good rule, which is the ball toss arm following the direction of the net post.



3 A good ball toss, with perfect arm extension. Ivanovic's racquet is high and her elbow moves backward as her foot moves forward.



4 This is a fantastic flexible arm position which drops down and is ready to whip up and out. Ivanovic's feet are a little side on, as her back foot drops a little short of her front foot.



Pat Cash, who won Wimbledon in 1987, contributing to a total of seven singles titles during his career, reached a career-high world No. 4 ranking. The Melbourne-born champion will also be remembered as one of Australia's finest Davis Cup players. The classic hard-fighting serve and volleyer also reached the final of the Australian Open in 1987 and 1988, the first year at Melbourne Park.

He currently runs the Pat Cash International Tennis Academy at Hope Island Resort on the Gold Coast. For more information, log on to www.patcash.net, where you can also view previous *Australian Tennis Magazine* instructional articles from Pat.

Photography by John Anthony

At World No. 2, **Ana Ivanovic** is almost perfect on the WTA Tour.

The 20-year-old has an arsenal of powerful weapons. She does most things extremely well – which most men and only a few of the female players are able to do.

The Serbian is an inspiration to many female juniors. Here, you'll see a great example of how they can learn from Ivanovic's **serve**.

By Pat Cash



5 There is good arm extension and body angle, with Ivanovic's head position rotating around to face the net.



6 Even though she has very little knee bend, Ivanovic gets plenty of height off the ground.



7 The telltale sign of a good serve is this near perfect landing position on the court – as Ivanovic shows us here.

Next month:

As attention turns to the pristine grass courts of the All England Club, we consider who can shine at Wimbledon.